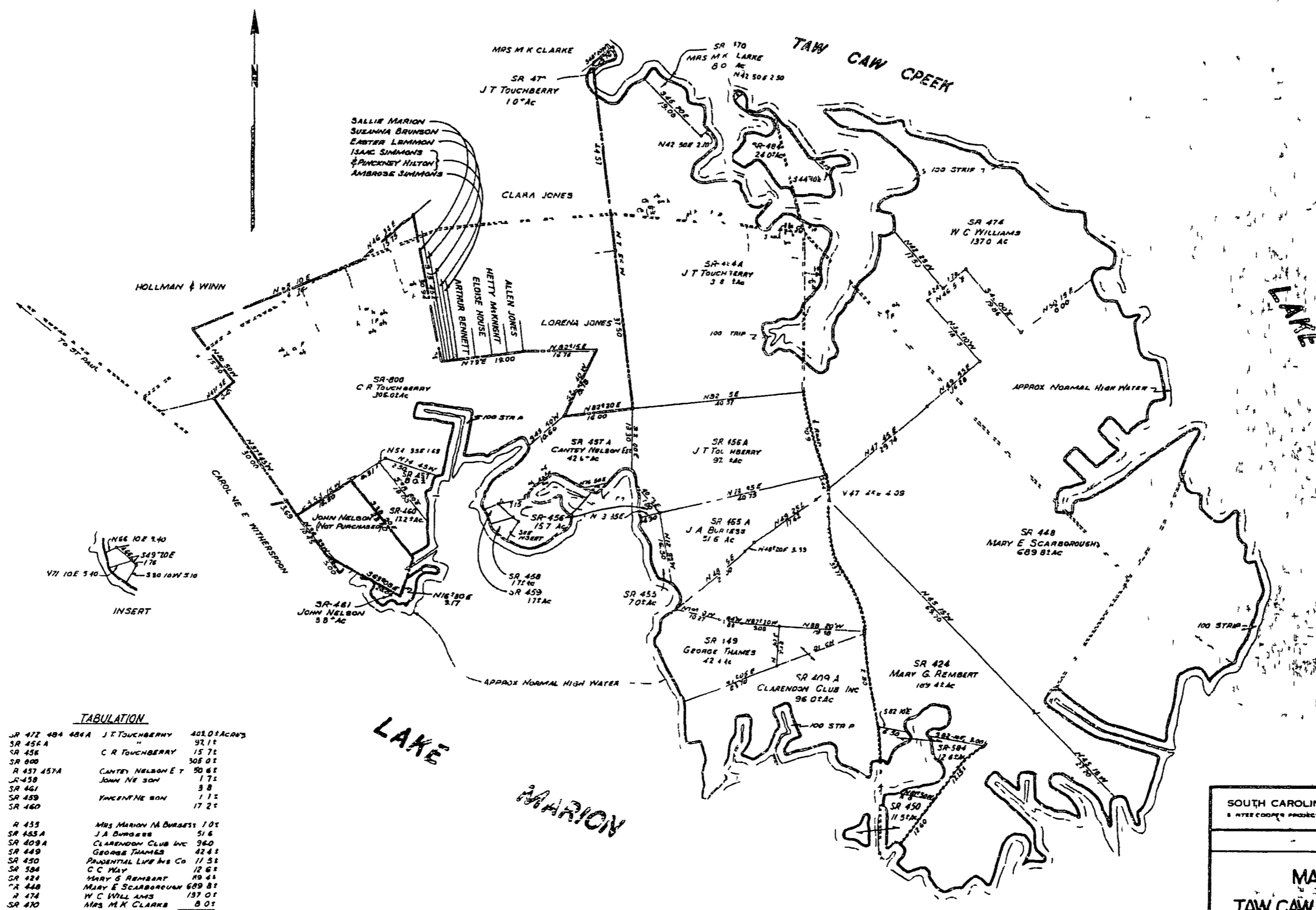


A SCPSA
S

NORTH CAROLINA PUBLIC SERVICE AUTHORITY
Santee Reservoir
LAND MAP NO 35.5
GLENDON COUNTY
MARZA ENGINEERING COMPANY
CHARLESTON



TABULATION

SR 472 484 484A	J.T. TOUCHBERRY	401.01 ACRES
SR 454 A	"	97.11
SR 456	C.R. TOUCHBERRY	15.71
SR 458	"	308.01
SR 459	"	50.62
SR 457A	CANTLEY NELSON ET AL	1.71
SR 458	JOHN NE NELSON	3.8
SR 461	JOHN NELSON	1.11
SR 459	YACINTHE BON	17.21
SR 455	MRS MARION M BURGESS	7.01
SR 455 A	J.A. BURGESS	5.16
SR 409 A	CLARENDON CLUB INC	96.01
SR 449	GEORGE THAMES	42.41
SR 450	PRIORITIAL LIFE INS CO	11.51
SR 584	C.C. MAY	12.61
SR 424	MARY G REMBERT	109.41
SR 448	MARY E SCARBOROUGH	689.81
SR 474	W.C. WILLIAMS	137.01
SR 470	MRS M.K. CLARKE	8.01
TOTAL		2141.1 ACRES

A SCBA
7

SOUTH CAROLINA PUBLIC SERVICE AUTHORITY
A NITE COOPER'S PRODUCT

**MAP OF LANDS
TAW CAW CREEK PENINSULA**

SCALE 1" = 10 CHAINS

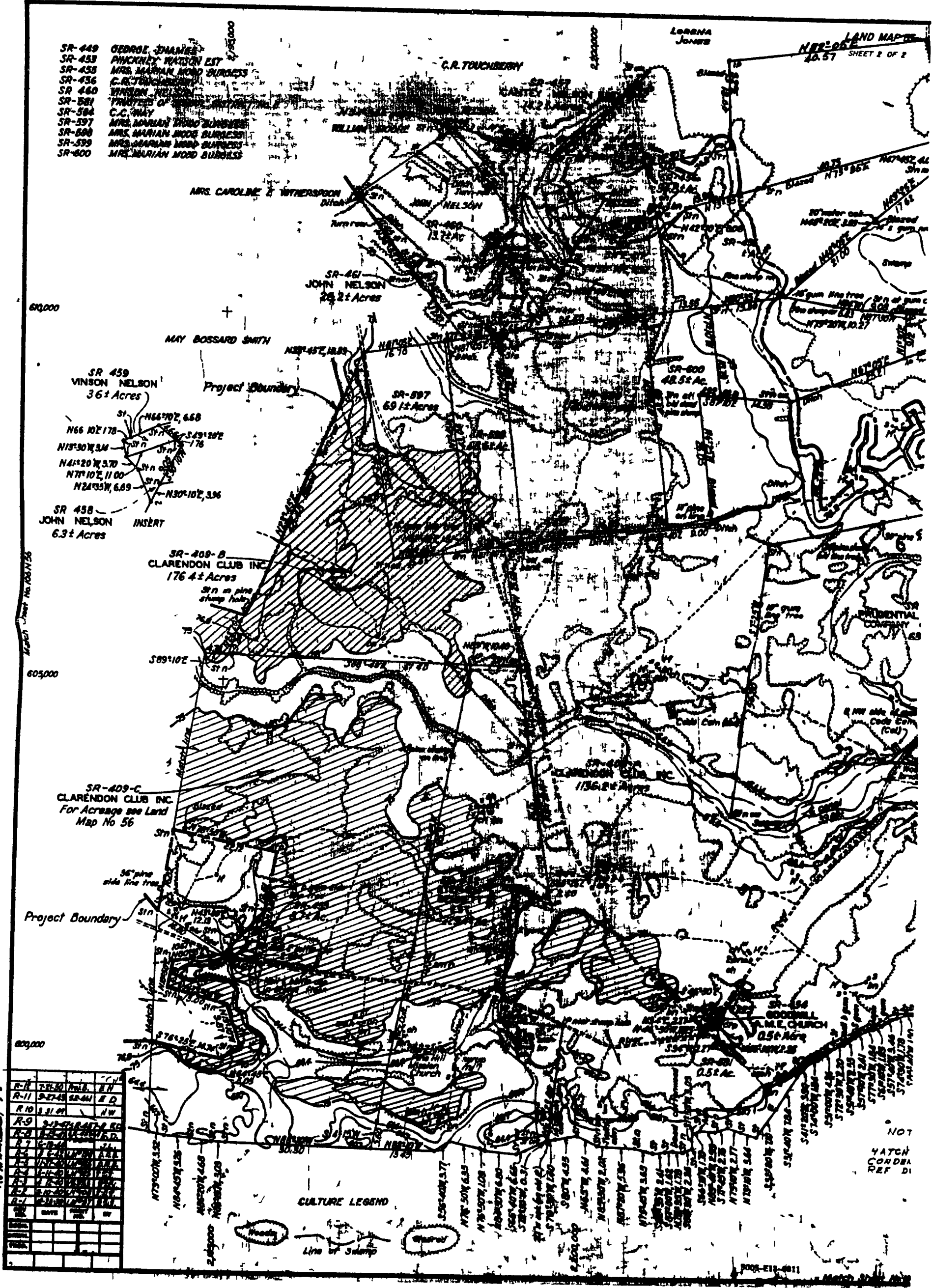
ENGINEERING DEPARTMENT

APPROVED: [Signature]
DATE: 9/27/49

4200-A10

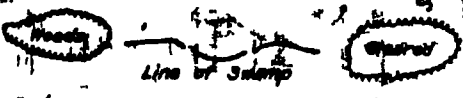
REVISIONS	NO.	DESCRIPTION

- SR-449 GEORGE J. JAMES
- SR-453 PINCKNEY WATSON EST
- SR-458 MRS. MARIAN MOOD BURGESS
- SR-456 C.R. TOUCHBERRY
- SR-460 WYNDON NELSON
- SR-581 TRUSTEES OF ...
- SR-584 C.C. WAY
- SR-597 MRS. MARIAN MOOD BURGESS
- SR-600 MRS. MARIAN MOOD BURGESS
- SR-600 MRS. MARIAN MOOD BURGESS



R-11	SR-50	SR-51	SR-52	SR-53	SR-54	SR-55	SR-56	SR-57	SR-58	SR-59	SR-60
R-10	SR-61	SR-62	SR-63	SR-64	SR-65	SR-66	SR-67	SR-68	SR-69	SR-70	SR-71
R-9	SR-72	SR-73	SR-74	SR-75	SR-76	SR-77	SR-78	SR-79	SR-80	SR-81	SR-82
R-8	SR-83	SR-84	SR-85	SR-86	SR-87	SR-88	SR-89	SR-90	SR-91	SR-92	SR-93
R-7	SR-94	SR-95	SR-96	SR-97	SR-98	SR-99	SR-100	SR-101	SR-102	SR-103	SR-104
R-6	SR-105	SR-106	SR-107	SR-108	SR-109	SR-110	SR-111	SR-112	SR-113	SR-114	SR-115
R-5	SR-116	SR-117	SR-118	SR-119	SR-120	SR-121	SR-122	SR-123	SR-124	SR-125	SR-126
R-4	SR-127	SR-128	SR-129	SR-130	SR-131	SR-132	SR-133	SR-134	SR-135	SR-136	SR-137
R-3	SR-138	SR-139	SR-140	SR-141	SR-142	SR-143	SR-144	SR-145	SR-146	SR-147	SR-148
R-2	SR-149	SR-150	SR-151	SR-152	SR-153	SR-154	SR-155	SR-156	SR-157	SR-158	SR-159
R-1	SR-160	SR-161	SR-162	SR-163	SR-164	SR-165	SR-166	SR-167	SR-168	SR-169	SR-170

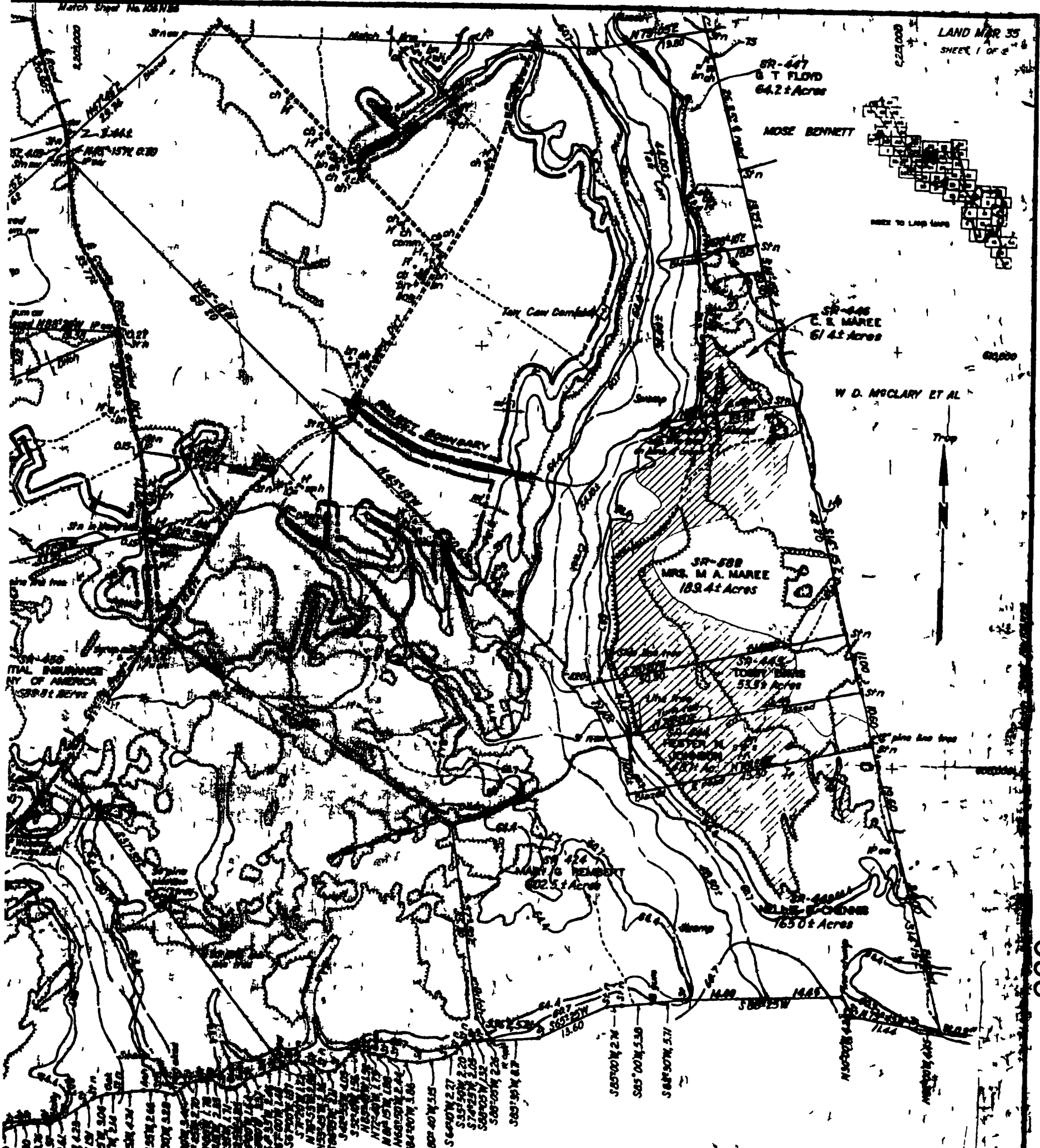
CULTURE LEGEND



A SCP SA
8
LS

Match Sheet No. 106N15

LAND MAP 35
SHEET 1 OF 2

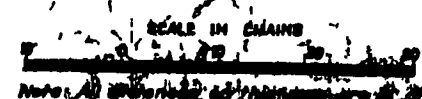


SA-450
ITAL INSURANCE
CO. OF AMERICA
550-51 BENT

- SR-447
- SR-446
- SR-445
- SR-444
- SR-443
- SR-442
- SR-441
- SR-440
- SR-439
- SR-438
- SR-437
- SR-436
- SR-435
- SR-434
- SR-433
- SR-432
- SR-431
- SR-430
- SR-429
- SR-428
- SR-427
- SR-426
- SR-425
- SR-424
- SR-423
- SR-422
- SR-421
- SR-420
- SR-419
- SR-418
- SR-417
- SR-416
- SR-415
- SR-414
- SR-413
- SR-412
- SR-411
- SR-410
- SR-409
- SR-408
- SR-407
- SR-406
- SR-405
- SR-404
- SR-403
- SR-402
- SR-401
- SR-400
- SR-399
- SR-398
- SR-397
- SR-396
- SR-395
- SR-394
- SR-393
- SR-392
- SR-391
- SR-390
- SR-389
- SR-388
- SR-387
- SR-386
- SR-385
- SR-384
- SR-383
- SR-382
- SR-381
- SR-380
- SR-379
- SR-378
- SR-377
- SR-376
- SR-375
- SR-374
- SR-373
- SR-372
- SR-371
- SR-370
- SR-369
- SR-368
- SR-367
- SR-366
- SR-365
- SR-364
- SR-363
- SR-362
- SR-361
- SR-360
- SR-359
- SR-358
- SR-357
- SR-356
- SR-355
- SR-354
- SR-353
- SR-352
- SR-351
- SR-350
- SR-349
- SR-348
- SR-347
- SR-346
- SR-345
- SR-344
- SR-343
- SR-342
- SR-341
- SR-340
- SR-339
- SR-338
- SR-337
- SR-336
- SR-335
- SR-334
- SR-333
- SR-332
- SR-331
- SR-330
- SR-329
- SR-328
- SR-327
- SR-326
- SR-325
- SR-324
- SR-323
- SR-322
- SR-321
- SR-320
- SR-319
- SR-318
- SR-317
- SR-316
- SR-315
- SR-314
- SR-313
- SR-312
- SR-311
- SR-310
- SR-309
- SR-308
- SR-307
- SR-306
- SR-305
- SR-304
- SR-303
- SR-302
- SR-301
- SR-300
- SR-299
- SR-298
- SR-297
- SR-296
- SR-295
- SR-294
- SR-293
- SR-292
- SR-291
- SR-290
- SR-289
- SR-288
- SR-287
- SR-286
- SR-285
- SR-284
- SR-283
- SR-282
- SR-281
- SR-280
- SR-279
- SR-278
- SR-277
- SR-276
- SR-275
- SR-274
- SR-273
- SR-272
- SR-271
- SR-270
- SR-269
- SR-268
- SR-267
- SR-266
- SR-265
- SR-264
- SR-263
- SR-262
- SR-261
- SR-260
- SR-259
- SR-258
- SR-257
- SR-256
- SR-255
- SR-254
- SR-253
- SR-252
- SR-251
- SR-250
- SR-249
- SR-248
- SR-247
- SR-246
- SR-245
- SR-244
- SR-243
- SR-242
- SR-241
- SR-240
- SR-239
- SR-238
- SR-237
- SR-236
- SR-235
- SR-234
- SR-233
- SR-232
- SR-231
- SR-230
- SR-229
- SR-228
- SR-227
- SR-226
- SR-225
- SR-224
- SR-223
- SR-222
- SR-221
- SR-220
- SR-219
- SR-218
- SR-217
- SR-216
- SR-215
- SR-214
- SR-213
- SR-212
- SR-211
- SR-210
- SR-209
- SR-208
- SR-207
- SR-206
- SR-205
- SR-204
- SR-203
- SR-202
- SR-201
- SR-200
- SR-199
- SR-198
- SR-197
- SR-196
- SR-195
- SR-194
- SR-193
- SR-192
- SR-191
- SR-190
- SR-189
- SR-188
- SR-187
- SR-186
- SR-185
- SR-184
- SR-183
- SR-182
- SR-181
- SR-180
- SR-179
- SR-178
- SR-177
- SR-176
- SR-175
- SR-174
- SR-173
- SR-172
- SR-171
- SR-170
- SR-169
- SR-168
- SR-167
- SR-166
- SR-165
- SR-164
- SR-163
- SR-162
- SR-161
- SR-160
- SR-159
- SR-158
- SR-157
- SR-156
- SR-155
- SR-154
- SR-153
- SR-152
- SR-151
- SR-150
- SR-149
- SR-148
- SR-147
- SR-146
- SR-145
- SR-144
- SR-143
- SR-142
- SR-141
- SR-140
- SR-139
- SR-138
- SR-137
- SR-136
- SR-135
- SR-134
- SR-133
- SR-132
- SR-131
- SR-130
- SR-129
- SR-128
- SR-127
- SR-126
- SR-125
- SR-124
- SR-123
- SR-122
- SR-121
- SR-120
- SR-119
- SR-118
- SR-117
- SR-116
- SR-115
- SR-114
- SR-113
- SR-112
- SR-111
- SR-110
- SR-109
- SR-108
- SR-107
- SR-106
- SR-105
- SR-104
- SR-103
- SR-102
- SR-101
- SR-100
- SR-99
- SR-98
- SR-97
- SR-96
- SR-95
- SR-94
- SR-93
- SR-92
- SR-91
- SR-90
- SR-89
- SR-88
- SR-87
- SR-86
- SR-85
- SR-84
- SR-83
- SR-82
- SR-81
- SR-80
- SR-79
- SR-78
- SR-77
- SR-76
- SR-75
- SR-74
- SR-73
- SR-72
- SR-71
- SR-70
- SR-69
- SR-68
- SR-67
- SR-66
- SR-65
- SR-64
- SR-63
- SR-62
- SR-61
- SR-60
- SR-59
- SR-58
- SR-57
- SR-56
- SR-55
- SR-54
- SR-53
- SR-52
- SR-51
- SR-50
- SR-49
- SR-48
- SR-47
- SR-46
- SR-45
- SR-44
- SR-43
- SR-42
- SR-41
- SR-40
- SR-39
- SR-38
- SR-37
- SR-36
- SR-35
- SR-34
- SR-33
- SR-32
- SR-31
- SR-30
- SR-29
- SR-28
- SR-27
- SR-26
- SR-25
- SR-24
- SR-23
- SR-22
- SR-21
- SR-20
- SR-19
- SR-18
- SR-17
- SR-16
- SR-15
- SR-14
- SR-13
- SR-12
- SR-11
- SR-10
- SR-9
- SR-8
- SR-7
- SR-6
- SR-5
- SR-4
- SR-3
- SR-2
- SR-1

SANTEE RIVER, CYPRESS LUMBER CO.

NOTE
ALL UNIDENTIFIED CROSS
TYPING IS US RULING
DRAINAGE &
D88 E-1500



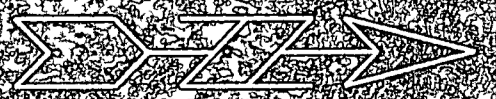
SOUTH CAROLINA PUBLIC SERVICE AUTHORITY	
SANTÉE-COOPER PROJECT PWA SECRET NO. 4320	
SANTÉE RESERVOIR	
LAND MAP NO. 35	
CLARENDON COUNTY	
EXHIBIT K - SHEET 88	1106N35

289

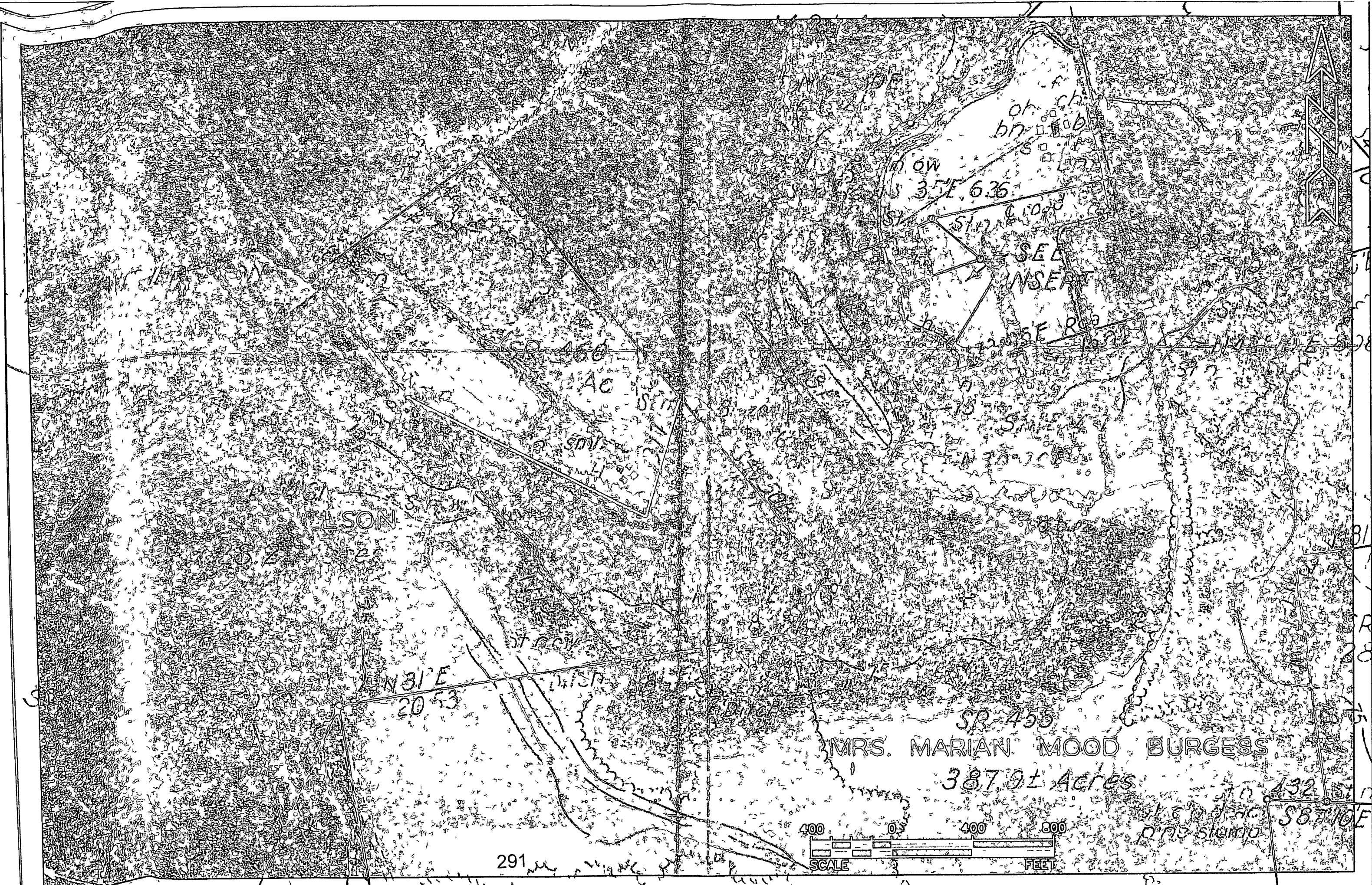
A SCPSA
8
RS



290



2110 2116



of ch
bn 100
s 100
ln

OW
35 E 6 36

SR 450

SEA
INSERT

SR 450

SR 450
Ac

ELSON

W 31 E
20 53

SR 455

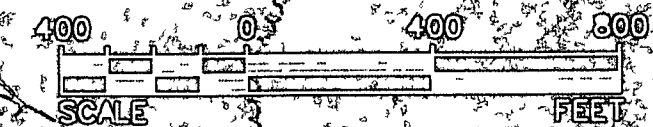
MRS. MARIAN MOOD BURGESS

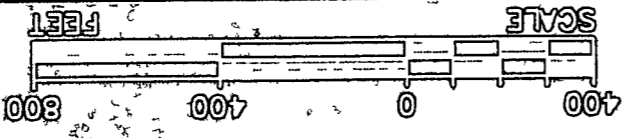
387.9± Acres

SR 432

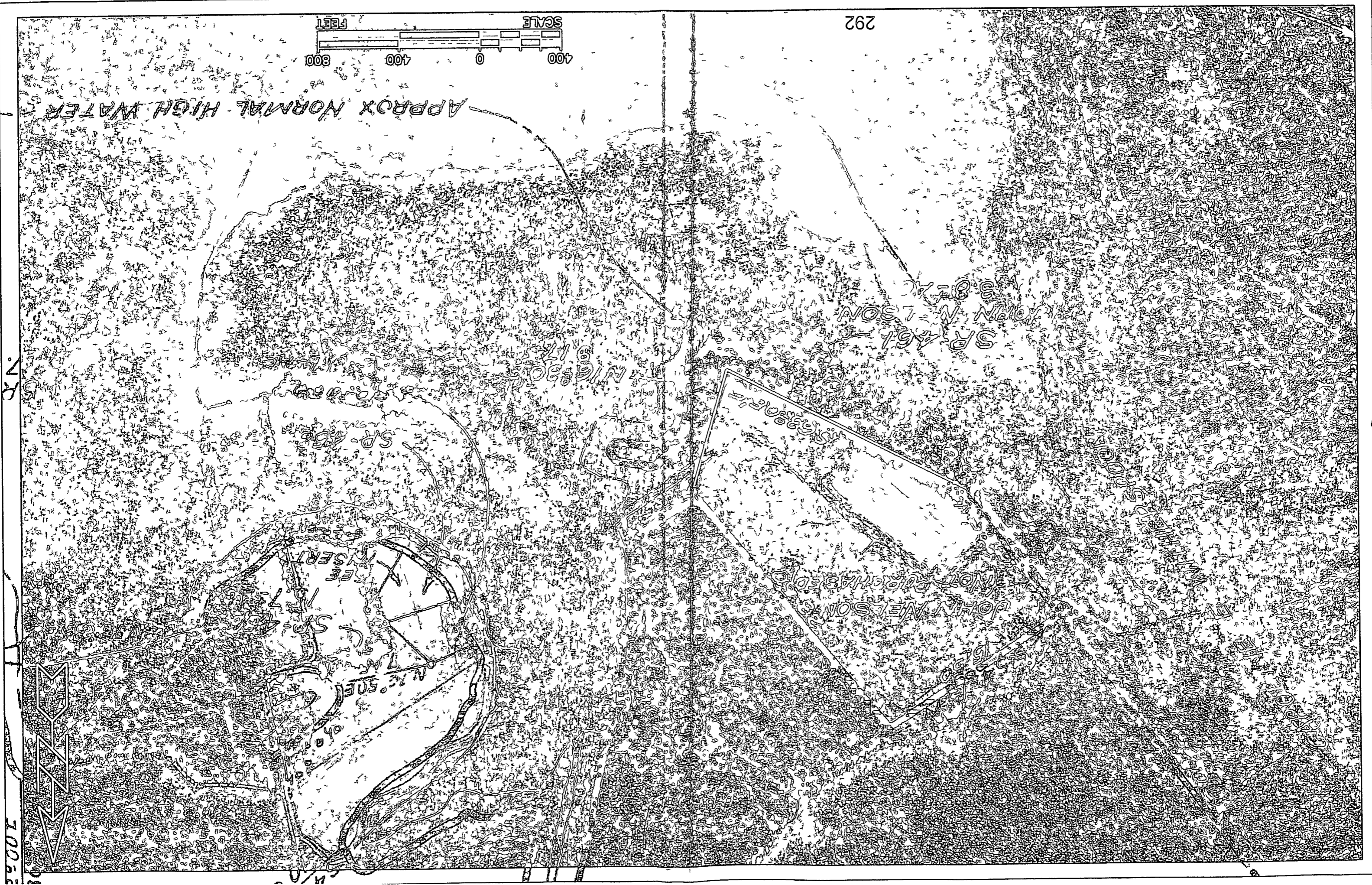
D 75 STIMU

SR 10E

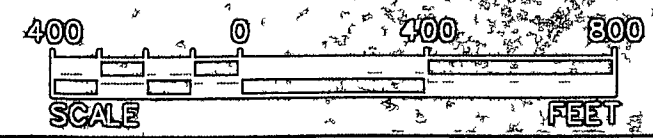
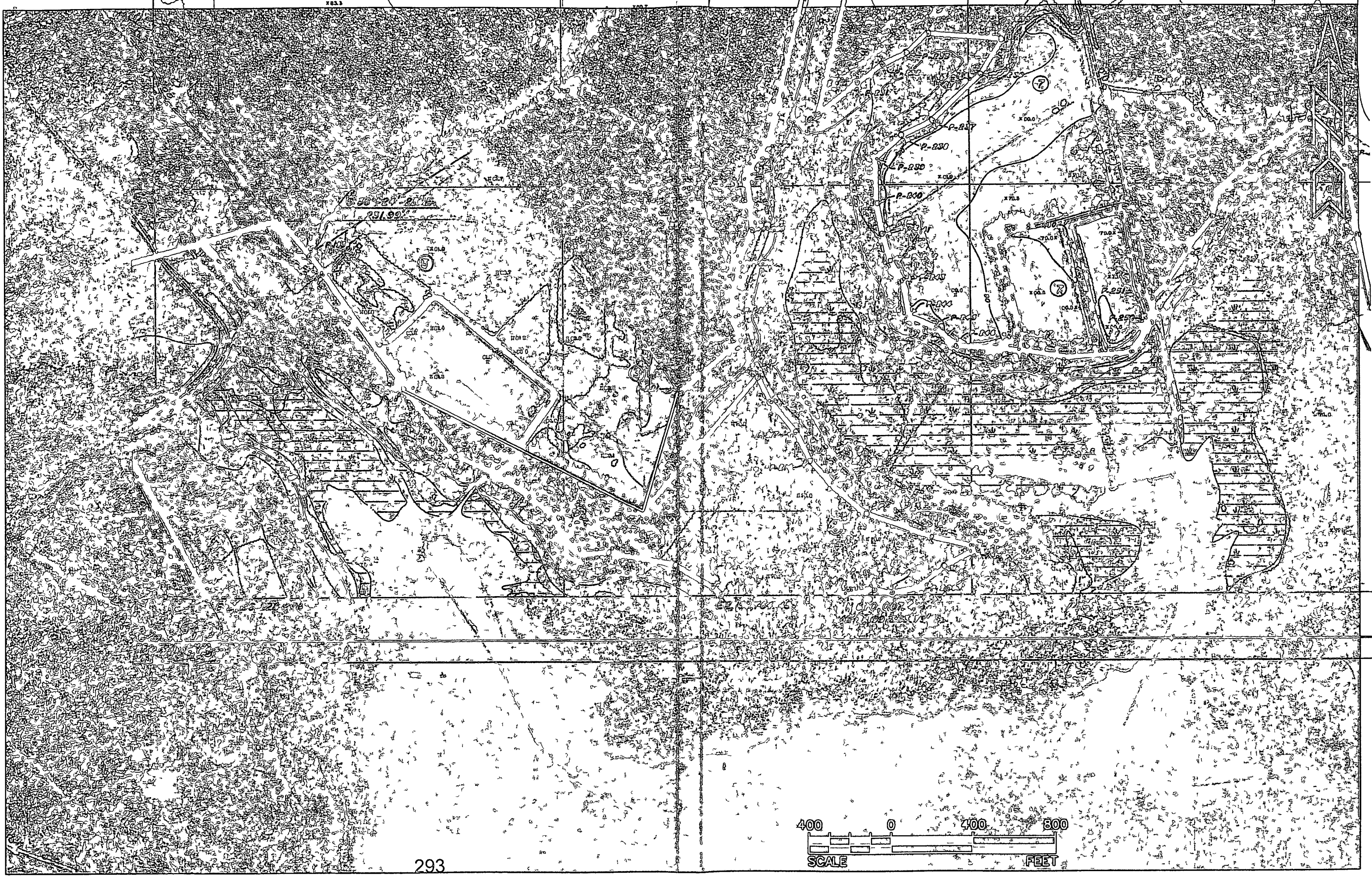




APPROX NORMAL HIGH WATER



70052





70052

100

100

100

100

100

100

OR
BRIDGE

MS

MS

MS

MS

MS

MS

MS

MS

MS

MS

MS

MS

MS

MS

MS

MS

MS

MS

MS

MS

MS

MS

MS

MS

MS

MS

MS

MS

MS

MS

MS

MS

MS

MS

MS

MS

MS

MS

MS

MS

MS

MS

MS

MS

MS

MS

MS

MS

MS

MS

MS

MS

MS

MS

MS

MS

MS

MS

MS

MS

MS

MS

MS

MS

MS

MS

MS

MS

MS

MS

MS

MS

MS

MS

MS

MS

MS

MS

MS

MS

MS

MS

MS

MS

MS

MS

MS

MS

MS

MS

MS

MS

MS

MS

MS

MS

MS

MS

MS

MS

MS

MS

MS

MS

MS

MS

MS

MS

MS

MS

MS

MS

MS

MS

MS

MS

MS

MS

MS

MS

MS

MS

MS

MS

MS

MS

MS

MS

MS

MS

MS

MS

MS

MS

MS

MS

MS

MS

MS

MS

MS

MS

MS

MS

MS

MS

MS

MS

MS

MS

MS

MS

MS

MS

MS

MS

MS

MS

MS

MS

MS

MS

MS

MS

MS

MS

MS

MS

MS

MS

MS

MS

MS

MS

MS

MS

MS

MS

MS

MS

MS

MS

MS

MS

MS

MS

MS

MS

MS

MS

MS

MS

MS

MS

MS

MS

MS

MS

MS

MS

MS

MS

MS

MS

MS

MS

MS

MS

MS

MS

MS

MS

MS

MS

MS

MS

MS

MS

MS

MS

MS

MS

MS

MS

MS

MS

MS

MS

MS

MS

MS

MS

MS

MS

MS

MS

MS

MS

MS

MS

MS

MS

MS

MS

MS

MS

MS

MS

MS

MS

MS

MRS. MARIAN MOOD BURGESS

SR 455

APB ROAD NORMAL HIGH WATER

SR 455

SR 455



294

SR 455

SR 455

SR 455

SR 455

SR 455

SR 455

SR 455

SR 455

SR 455

SR 455

SR 455

SR 455

SR 455

SR 455

SR 455

SR 455

SR 455

SR 455

SR 455

SR 455

SR 455

SR 455

SR 455

SR 455

SR 455

SR 455

SR 455

SR 455

SR 455

SR 455

SR 455

SR 455

SR 455

SR 455

SR 455

SR 455

SR 455

SR 455

SR 455

SR 455

SR 455

SR 455

SR 455

SR 455

SR 455

SR 455

SR 455

SR 455

SR 455

SR 455

SR 455

SR 455

SR 455

SR 455

SR 455

SR 455

SR 455

SR 455

SR 455

SR 455

SR 455

SR 455

SR 455

SR 455

SR 455

SR 455

SR 455

SR 455

SR 455

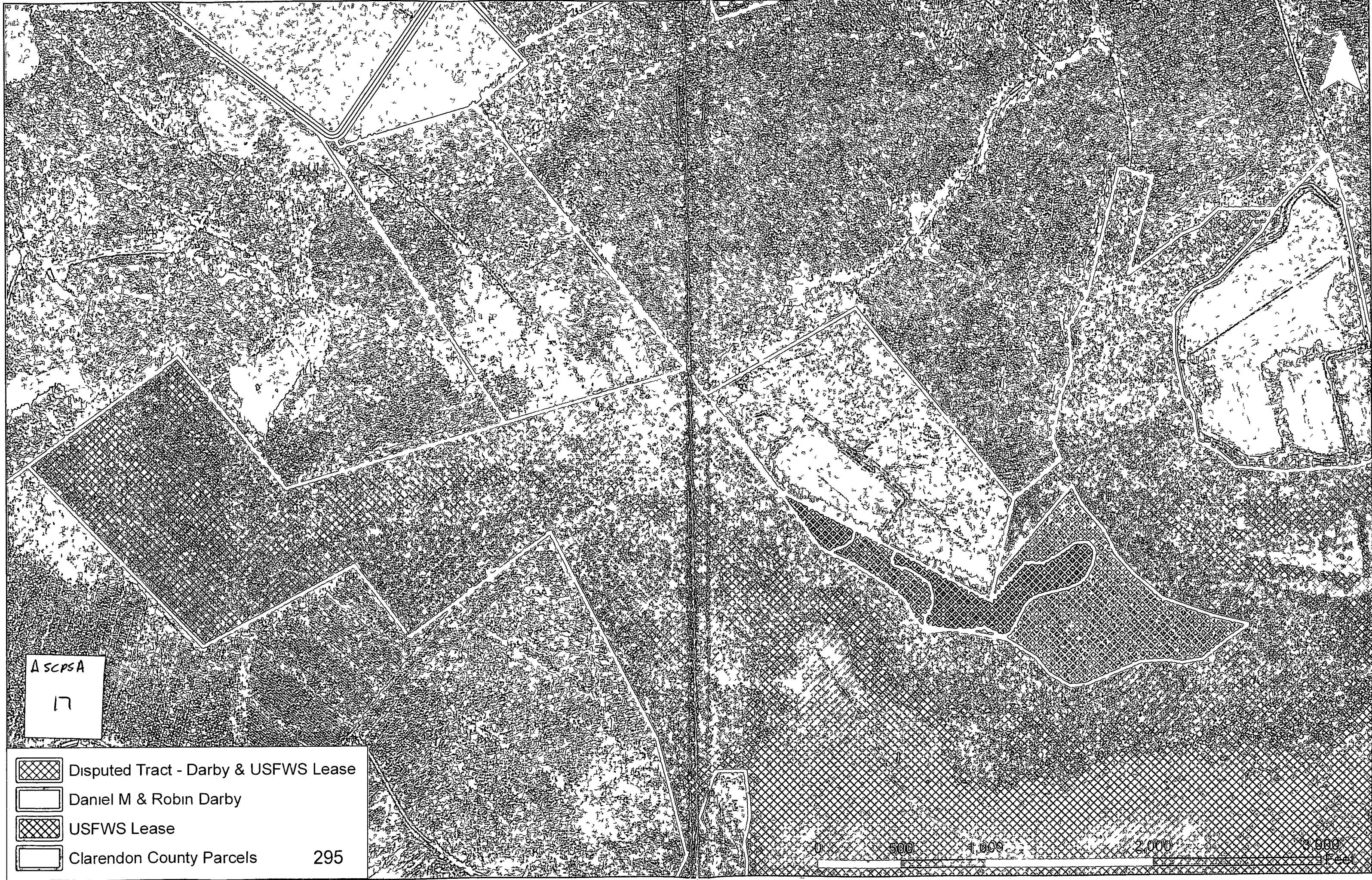
SR 455

SR 455

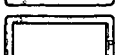
SR 455

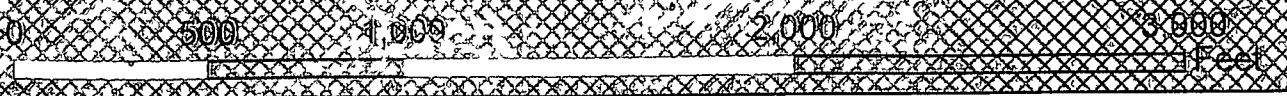
SR 455

SR 455



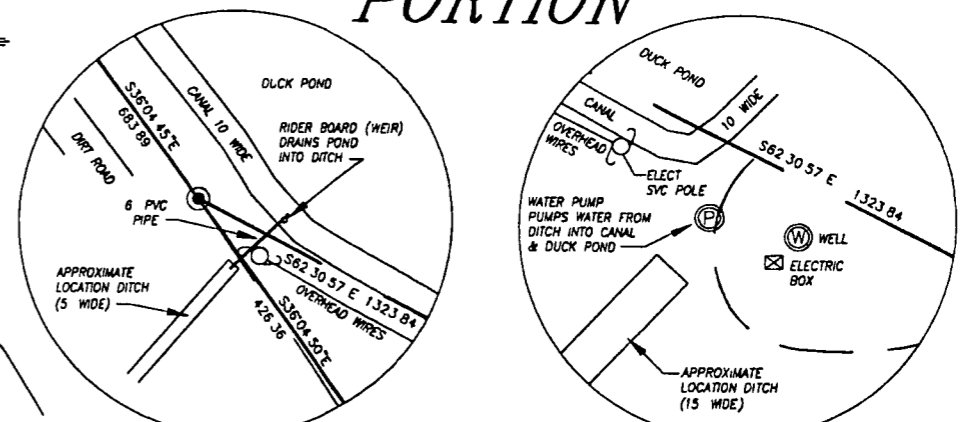
A SCPSA
17

-  Disputed Tract - Darby & USFWS Lease
-  Daniel M & Robin Darby
-  USFWS Lease
-  Clarendon County Parcels



PINE ISLAND UNIT NORTH CENTRAL PORTION

THIS MAP IS ORIENTED TO GRID NORTH OF THE SOUTH CAROLINA STATE PLANE COORDINATE SYSTEM NAD83 DATUM
CONVERGENCE ANGLE = + 0'21.58 774
SCALE FACTOR = 0.9997969

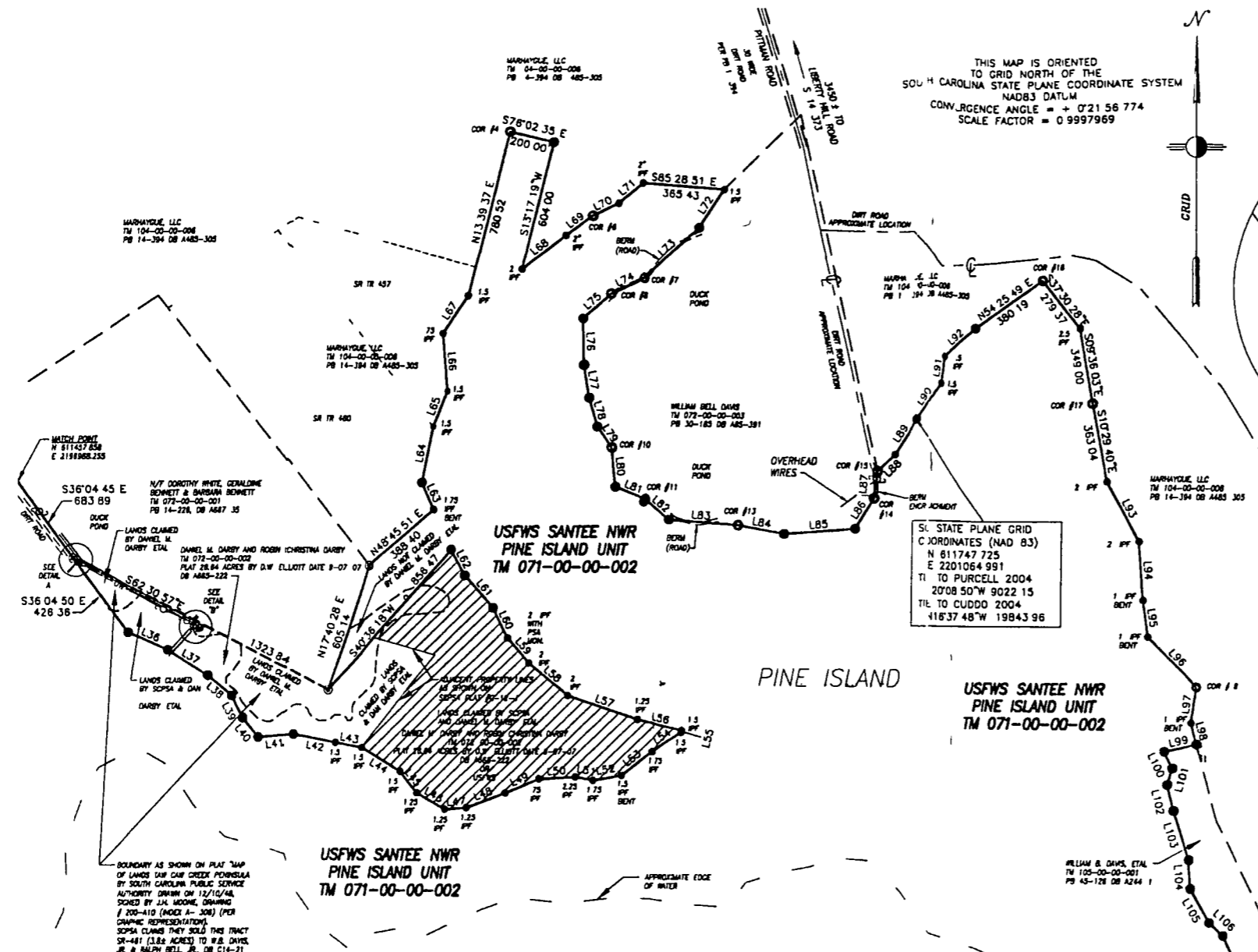
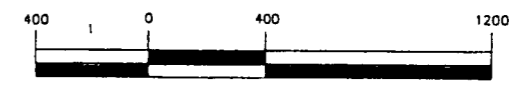


DETAIL "A"
1" = 40'

DETAIL "B"
1" = 40'

LEGEND

- IPF IRON PIPE FOUND (1 DIA) UNLESS OTHERWISE NOTED
- IRF IRON ROD FOUND (1 DIA) UNLESS OTHERWISE NOTED
- RBF REBAR FOUND (1 DIA) UNLESS OTHERWISE NOTED
- COR CORNER 3/4" INCH DIA. REBAR SET WITH US FISH & WS 2.5 DIA. ALUM. DISK STAMPED UNIT NAME, COR# DATED 2008 PLS #8811 PROJECTING 6" ABOVE THE GROUND
- POL POINT ON LINE 3/4" INCH DIA. REBAR SET PROJECTING 6" ABOVE THE GROUND
- CMF CONCRETE MONUMENT FOUND (4"x4") UNLESS OTHERWISE NOTED
- CMF S.C.P.S.A. CONCRETE MONUMENT WITH BRASS DISK (4" DIA) FOUND
- CMF S.C.P.S.A. CONCRETE MONUMENT ENCASED IN METAL STOVE PIPE FOUND (3" DIA)
- ▲ PKF PK NAIL FOUND UNLESS OTHERWISE NOTED
- ▲ PKS PK NAIL SET UNLESS OTHERWISE NOTED
- CL CENTERLINE
- USFWS SIGN
- FENCE
- PP POWER POLE
- * LIGHT POLE

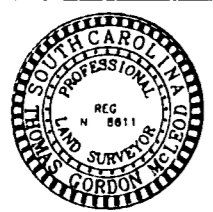


USFWS SANTEE NWR
PINE ISLAND UNIT
TM 071-00-00-002

USFWS SANTEE NWR
PINE ISLAND UNIT
TM 071-00-00-002

USFWS SANTEE NWR
PINE ISLAND UNIT
TM 071-00-00-002

THOMAS GORDON MCLEOD
PROFESSIONAL LAND SURVEYOR
P.O. BOX 1081 WALTERBORO S.C.
ZIP CODE 29488
TELE # (843) 549-7600



Thomas Gordon McLeod
Dec 2, 2008

PROPERTY LINE TABLE					
LINE	LENGTH	BEARING	LINE	LENGTH	BEARING
L36	197.58	S65.24.35 E	L67	208.05	N33.72.24 E
L37	220.82	S57.41.49 E	L68	249.11	N51.13.58 E
L38	145.93	S49.78.40 E	L69	151.00	N52.38.18 E
L39	114.57	S28.01.15 E	L70	129.04	N63.08.53 E
L40	114.14	S39.17.04 E	L71	143.82	N49.11.31 E
L41	155.98	N84.38.21 E	L72	208.04	S31.47.09 W
L42	204.48	S79.23.39 E	L73	337.35	S48.71.21 W
L43	121.08	S79.23.39 E	L74	168.72	S84.04.37 W
L44	208.98	S58.37.08 E	L75	189.78	S47.14.17 W
L45	125.05	S19.23.28 E	L76	213.81	S01.10.04 E
L46	48.70	S59.44.42 E	L77	152.48	S09.11.31 E
L47	97.38	N83.27.35 E	L78	138.15	S13.24.28 E
L48	187.8	N68.34.51 E	L79	114.85	S34.23.11 E
L49	183.58	N87.18.22 E	L80	178.95	S03.42.04 E
L50	88.74	N87.03.18 E	L81	148.57	S87.52.12 E
L51	78.39	S78.37.43 E	L82	143.39	S50.13.52 E
L52	128.38	N79.41.33 E	L83	310.75	S83.47.05 E
L53	175.43	N51.02.24 E	L84	210.82	S79.41.34 E
L54	159.88	N57.07.28 E	L85	319.10	N83.08.11 E
L55	9.73	N14.51.21 E	L86	182.12	N31.07.09 E
L56	210.53	N79.41.20 W	L87	123.55	N08.43.31 E
L57	328.68	N71.08.01 W	L88	107.18	N49.14.47 E
L58	233.79	N49.48.38 W	L89	187.81	N32.20.12 E
L59	151.20	N40.41.25 W	L90	207.26	N38.09.19 E
L60	155.90	N23.23.01 W	L91	125.95	N08.19.30 E
L61	187.19	N40.23.31 W	L92	202.38	N48.07.51 E
L62	134.10	N27.43.01 W	L93	304.85	S27.40.23 E
L63	134.08	N27.43.01 W	L94	289.37	S04.28.32 E
L64	280.88	N10.54.04 E	L95	171.28	S07.48.54 E
L65	174.56	N21.20.53 E	L96	314.93	S42.08.27 E
L66	265.89	N04.43.28 W	L97	167.10	S08.31.42 W

NOTES
1 PROPERTY MAY BE SUBJECT TO EASEMENTS OF RECORD ZONING AND BUILDING OFFSETS
2 THIS SURVEY WAS PREPARED WITHOUT THE BENEFIT OF A TITLE SEARCH BY AN ATTORNEY
3 THIS PROPERTY MAY NOT BE SUBJECT TO WETLANDS SURFACE FEATURES AND EASEMENTS OF RECORD OR NOT OF RECORD

I hereby certify to (s) show that the best of my knowledge and belief the survey shown as made accordance with the requirements of the Uniform Standard and Practice of Land Surveying in South Carolina and that the same is correct and true to the best of my knowledge and belief.

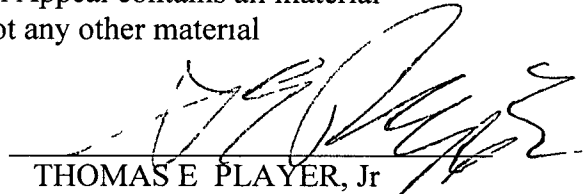
U.S. DEPARTMENT OF THE INTERIOR FISH AND WILDLIFE SERVICE
SANTEE NATIONAL WILDLIFE REFUGE
SANTEE NATIONAL WILDLIFE REFUGE
PRESENTLY SHOWN ON
TM 072-00, 073-00, 104-00 & 105-00
SPECIAL PURPOSE SURVEY AND PLAT OF
CERTAIN PORTIONS OF BOUNDARY LINES OF THE
PINE ISLAND UNIT
FOR THE UNITED STATES OF AMERICA
FOR ADMINISTRATION AS A NATIONAL WILDLIFE REFUGE
BY THE U.S. SECRETARY OF THE INTERIOR
THROUGH THE U.S. FISH AND WILDLIFE SERVICE

LOCATED ABOUT 7.7 MILES EAST-NORTHEAST OF THE TOWN OF SANTEE IN CLARENDON COUNTY, S.C.

OWNER AND/OR LESSEE U.S.A. ADMINISTERED BY U.S. FISH AND WILDLIFE SERVICE
MAILING ADDRESS 1875 CENTURY BLVD ATLANTA, GA. 30345
DATE OF SURVEY FEB - DEC 2 2008 SCALE 1 inch = 400 feet
U.S. FISH & WS CONTRACT #101818D001/0001 ORDER # 401817Y100

ASCPA
18

The undersigned hereby certifies that this Record on Appeal contains all material proposed to be included by any of the parties and not any other material



THOMAS E PLAYER, Jr
PLAYER & McMILLAN, LLC
305 North Main Street
Post Office Drawer 3690
Sumter, South Carolina 29151-
3690
(803) 775-2306
Attorney for the Appellant

Sumter, South Carolina
September 10, 2011

THE STATE OF SOUTH CAROLINA
In the Court of Appeals

APPEAL FROM SUMTER COUNTY
Court of Common Pleas

Thomas W Cooper, Jr , Circuit Court Judge

CASE NO 2008-CP-14-354

RECEIVED
SEP 16 2011

SC Court of Appeals

Daniel Darby,

Appellant,

vs

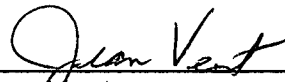
South Carolina Public Service Authority,

Respondent

PROOF OF MAILING

I, the undersigned employee of Player & McMillan, LLC, attorneys for the Appellant, hereby certify that I have this 12th day of September, 2011, served the **Record on Appeal** in the above captioned matter, on South Carolina Public Service Authority by causing a copy of the same to be personally deposited in a United States Postal Service mail box, postage prepaid with the return address clearly visible addressed to its attorney of record

Ms Elizabeth Warner, Esquire
Mr Ben Sadler, Esquire, Santee Cooper
Post Office Box 2946101
Moncks Corner, South Carolina 29461-6101
Attorneys for Respondent



Jean West
Legal Assistant to Thomas E Player, Jr
Player & McMillan, LLC
305 N Main Street
Post Office Drawer 3690
Sumter, South Carolina 29151-3690
(803) 775-2306

Sumter, South Carolina

1912 1 10 2 7/16

1912 1 10 2 7/16